



CENTRAL WIRE & IRON

**20 E 18TH STREET
DES MOINES, IA 50316
(515) 330-2244
WWW.CENTRALWIREANDIRON.COM**

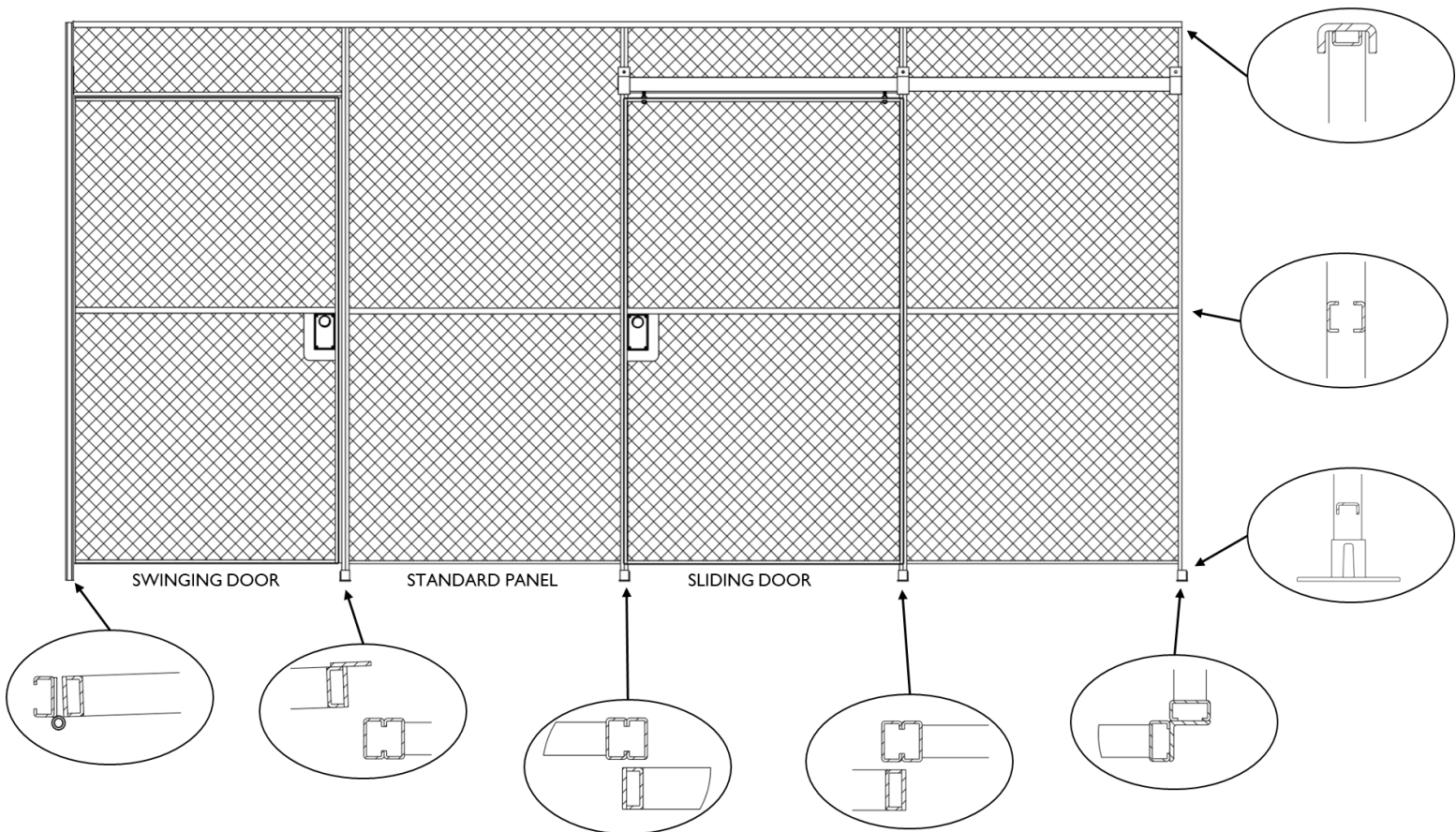
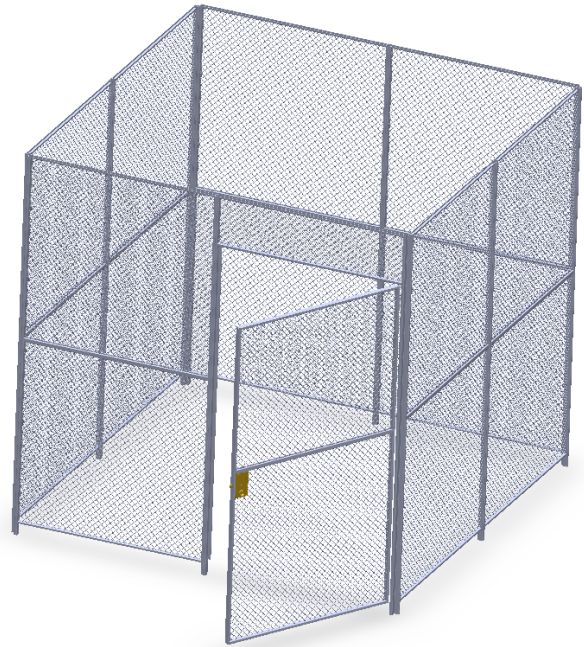
Wire Mesh Partition Specifications



Since 1902, Central Wire and Iron has developed and manufactured wire mesh panels that are still used in the industry today. Products have been installed nationwide for clients across a broad variety of industries including construction, government agencies, correctional institutions, hospitals, schools, manufacturing facilities, and more.



**PROUDLY MANUFACTURED
AND ASSEMBLED IN THE U.S.A.**



Type No. I35 Standard Partitions

- Wire Mesh:
10-gauge (0.135") intermediate crimp steel wire woven into 1 1/2" diamond mesh with wire securely clenched to framing
- Vertical Frames:
1 1/4" x 5/8" cold rolled "C" channel with 1/4" bolt holes 12" o.c.
- Horizontal Frames:
1" x 1/2" x 1/8" cold rolled channel mortised and tenoned at intersections
- Center Reinforcement Bars:
Two (2) 1" x 3/8" cold rolled channels bolted toe to toe through mesh and welded to vertical frames
- Top Capping Bars:
2 1/4" x 1" cold rolled channel with 1/4" U-bolts 24" o.c.
- Corner Posts:
1 1/4" x 1 1/4" x 1/8" angle
- Flat Bar Posts:
For partitions 12'-16' high - 5/16" x 2 1/2" flat bar
For partitions 16'-20' high - 5/16" x 3" flat bar
- Floor Sockets:
2" high aluminum cast shoes to hold panel legs in alignment
- Hinged Door Frames:
1 1/4" x 1/2" x 1/8" channel with 1 1/4" x 1/8" flat bar cover plate on all sides
1 1-gauge strike bar on lock side
1 1/2 pairs fast butt hinges
Special orders can include spring hinges
- Sliding Door Frames:
1 1/4" x 1/2" x 1/8" channel with 1 1/4" x 1/8" flat bar cover plate on all sides
Two (2) 4-wheel box rail door hangers, box track, and bottom guide channel
- Locks:
Bronze cylinder mortise type locks with cylinders individually keyed, keyed alike, or master keyed to the building system. All locks to have recessed knobs on inside.
Special orders can include panic bar exit device, push paddle exit device, code access lock, and proximity cards/keyfobs
- Sweep
3" sweep space under all panels and doors

Type No. 135 Standard Partitions Cont.

- **Adjustable Filler Panels:**
16-gauge steel sheet capable of filling openings from 2"- 13"
- **Wainscot:**
Special orders can include a 16-gauge steel sheet welded in lower 3'-6" portion of panels
- **Ceilings:**
Special orders can include top panels (ceilings) to securely enclose an area
- **Hardware:**
All hardware necessary for proper installation to be furnished
Field bracing furnished by erector unless otherwise noted
- **Finish:**
Grey or black dipped gloss enamel
Special orders can include powder coat or hot-dipped galvanized

No. 135 Nominal Sizes

24hr Quick Ship Sizes		
	Width	Height
Standard Panels	3' , 4' , 5'	8'
Swinging Doors	3' , 4'	8'
Sliding Doors	3' , 4' , 5' , 6'	8'

Stock Sizes		
	Width	Height
Standard Panels	3' , 4' , 5'	7' , 8' , 9' , 10' , 12'
Swinging Doors	3' , 4'	8' , 10'
Sliding Doors	3' , 4' , 5' , 6'	8' , 10'
Filler Panels	1' , 1'-6" , 2' , 2'-6" , 3'-6" , 4'-6"	7' , 8' , 9' , 10' , 12'

All panels and door sections have identical hardware mounting locations to allow for interchangeable arrangements in any layout configuration.

Special sizes and configurations made to order.

Type No. 192 Heavy Duty Partitions

- Wire Mesh:
6-gauge (0.192") intermediate crimp steel wire woven into 2" diamond mesh with wire securely clenched to framing
- Vertical & Horizontal Frames:
1 1/2" x 3/4" x 1/8" cold rolled channel mortised and tenoned at intersections
- Center Reinforcement Bars:
Two (2) 1" x 1/2" cold rolled channels bolted toe to toe through mesh and welded to vertical frames
- Top Capping Bars:
3" x 4.1 lb. channel with 1/4" U-bolts 24" o.c.
- Corner Posts:
1 1/2" x 1 1/2" x 1/8" angle
- Flat Bar Posts:
For partitions 12'-16' high – 5/16" x 3" flat bar
For partitions 16'-20' high – 5/16" x 3 1/2" flat bar
- Floor Sockets:
2 1/2" high cast shoes to hold panel legs in alignment
- Hinged Door Frames:
1 1/2" x 3/4" x 1/8" channel with 1 1/2" x 1/8" flat bar cover plate on all sides
1 1-gauge strike bar on lock side
1 1/2 pairs fast butt hinges
Special orders can include spring hinges
- Sliding Door Frames:
1 1/2" x 3/4" x 1/8" channel with 1 1/2" x 1/8" flat bar cover plate on all sides
Two (2) 4-wheel box rail door hangers, box track, and bottom guide channel
- Locks:
Bronze cylinder mortise type locks with cylinders individually keyed, keyed alike, or master keyed to the building system. All locks to have recessed knobs on inside.
Special orders can include panic bar exit device, push paddle exit device, code access lock, and proximity cards/keyfobs
- Sweep
3" sweep space under all panels and doors

Type No. 192 Heavy Duty Partitions Cont.

- **Adjustable Filler Panels:**
16-gauge steel sheet capable of filling openings from 2"- 13"
- **Wainscot:**
Special orders can include a 16-gauge steel sheet welded in lower 3'-6" portion of panels
- **Ceilings:**
Special orders can include top panels (ceilings) to securely enclose an area
- **Hardware:**
All hardware necessary for proper installation to be furnished
Field bracing furnished by erector unless otherwise noted
- **Finish:**
Grey or black dipped gloss enamel
Special orders can include powder coat or hot-dipped galvanized

No. 192 Nominal Sizes

24hr Quick Ship Sizes

	Width	Height
Standard Panels	3', 4', 5'	8'
Swinging Doors	3', 4'	8'
Sliding Doors	3', 4', 5', 6', 8'	8'

Stock Sizes

	Width	Height
Standard Panels	3', 4', 5'	7', 8', 9', 10', 12'
Swinging Doors	3', 4'	8', 10'
Sliding Doors	3', 4', 5', 6', 8'	8', 10'
Filler Panels	1', 1'-6", 2', 2'-6", 3'-6", 4'-6"	7', 8', 9', 10', 12'

All panels and door sections have identical hardware mounting locations to allow for interchangeable arrangements in any layout configuration.

Special sizes and configurations made to order.